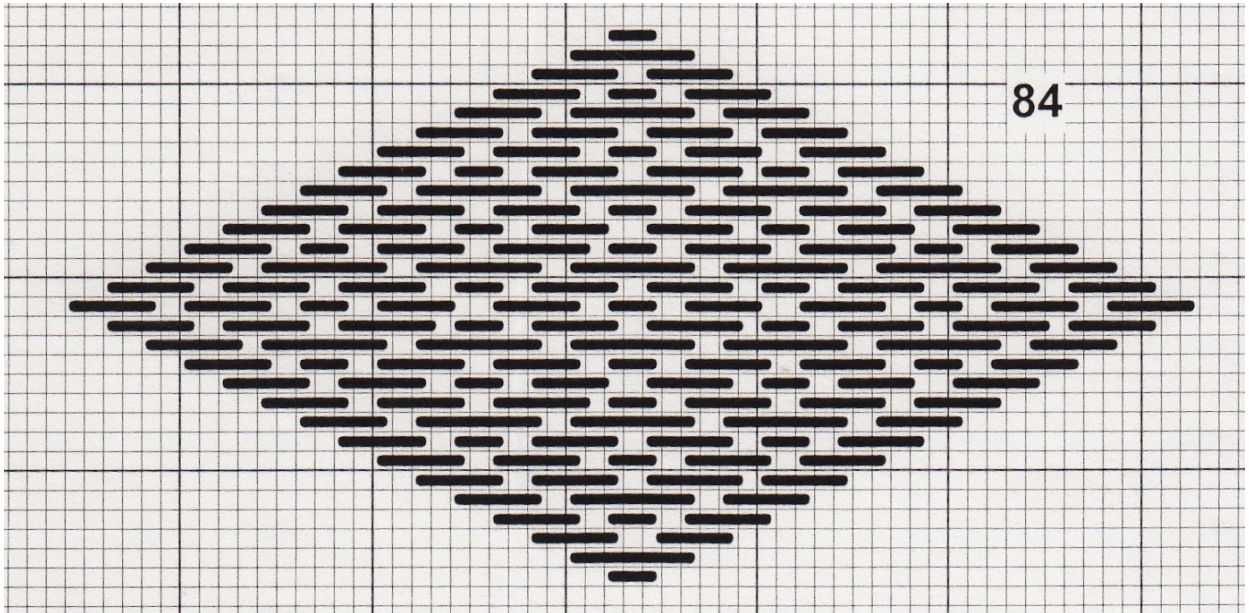


Hishizashi Pattern - No 84



Each line of the graph represents a thread.
The count is even, that is, over 2,4,6,8 & 10 threads.
You start in the middle, in the middle of a stitching thread and work the first row. Right to Left, then from the centre back to the right side.
Make sure this row is correct, it is your master row.
Do not pull the thread tight have a little slack.

